

A Tuning drift of EasyPal

Jan/1/2009 Ted

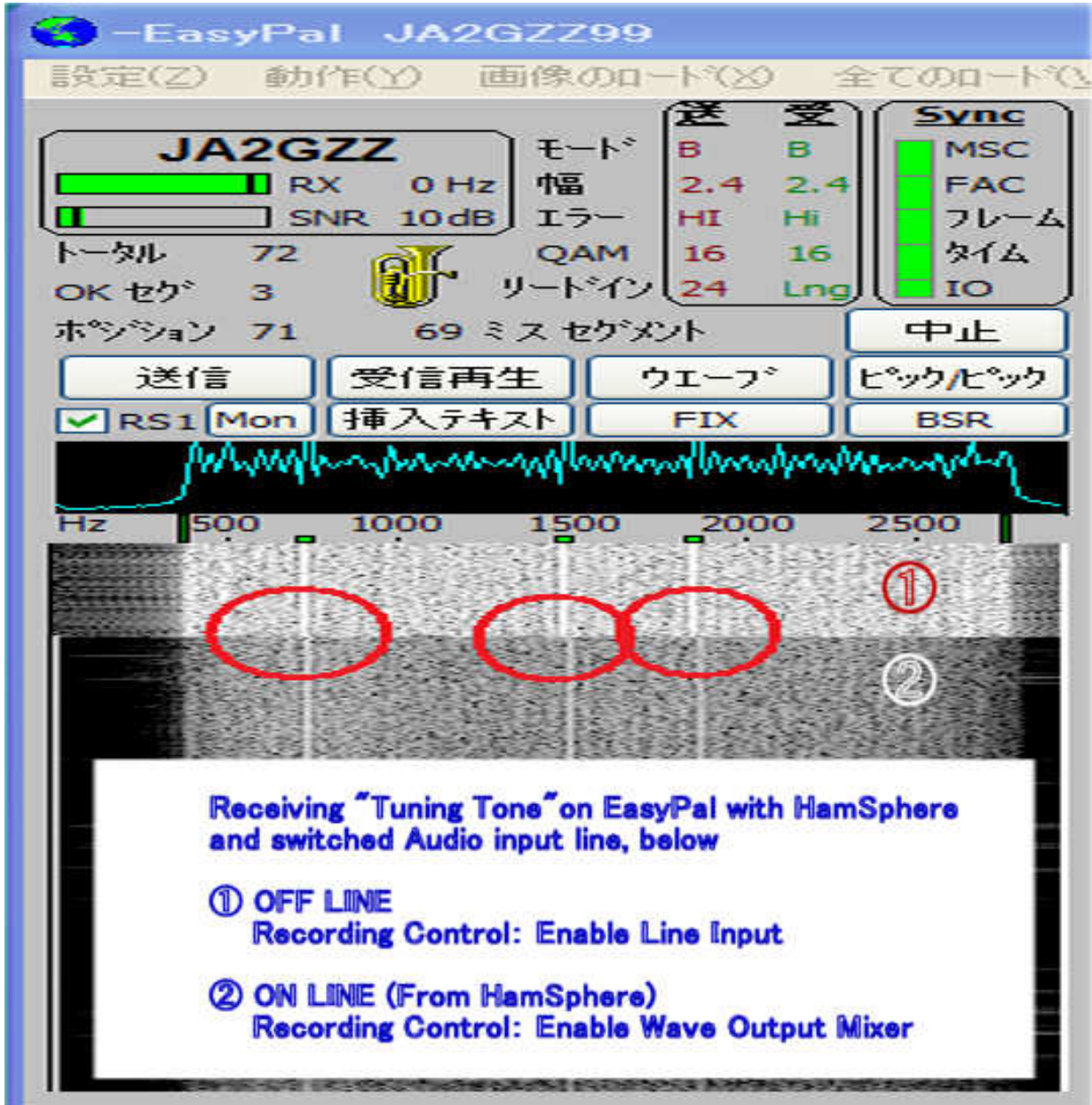
② ON LINE (Different -15Hz)

In this case, **de-tune** the frequency, so it's unable to receive a picture

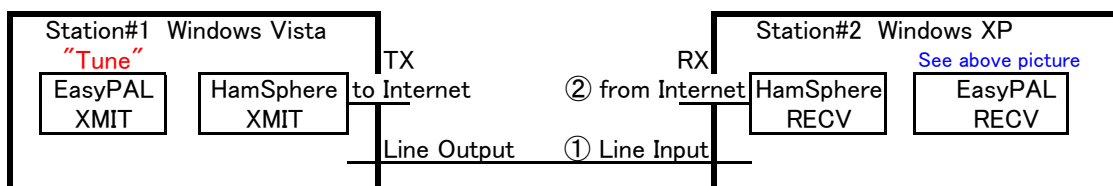
① OFF LINE (Different 0Hz)

When switched to Line Input, the tuning indicator automatically goes TRUE position. Mean's **"Ready to tune up"** so it can be receive a picture. But it doesn't connect to HamSphere, so unable to receive a picture form Internet. NOTE: HamSphere is continuously running

- Wish **"Sound card clock adjustment"** function on EasyPal



BLOCK DAIAGRAM



①

Detail: Windows XP

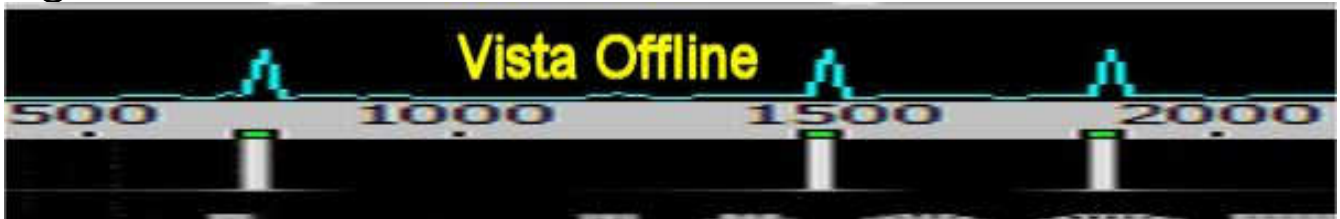


②



①

Detail: Windows Vista



②

